



salinagrace.org



COMMUNITY RESOURCE CENTER



Day Shelter

A safe place to rest and escape the weather

Care Managers

Help connect individuals with the agencies and resources that best meet their unique needs

Salina Grace guides individuals toward stability through hope, support, and wraparound care.

All services are provided free thanks to the generous support of our community.



Free Lunch

Served daily
Monday - Friday
11:30 a.m. - 12 p.m.

Showers

Clothing

Laundry Services

Mon - Fri
9:00 - 11:00 a.m.

Winter Shelter

November 15th - March 15th
304 W Grand Ave
Call 785-819-5542 for referral





Salina GRACE

YOUR CONNECTION TO LOCAL SERVICES FROM ONE LOCATION

COMMUNITY RESOURCE CENTER

**315 S Broadway Blvd
Salina, KS 67401**

785-833-2360

salinagrace.org

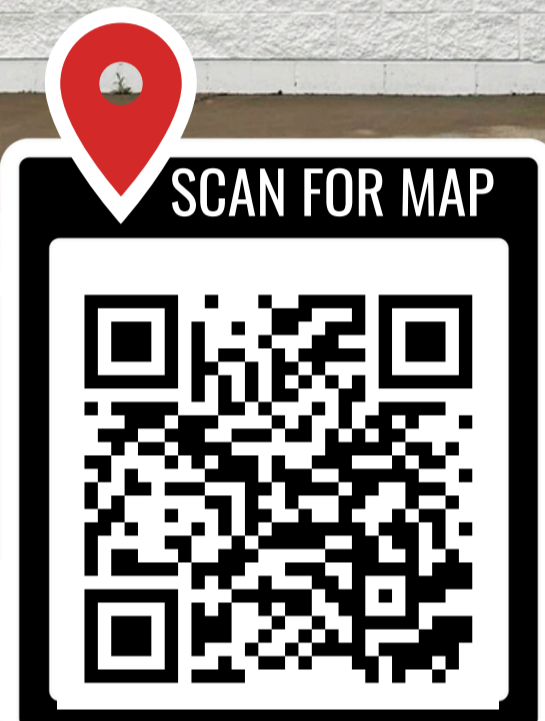
MONDAY - THURSDAY

7:30 AM - 4:00 PM

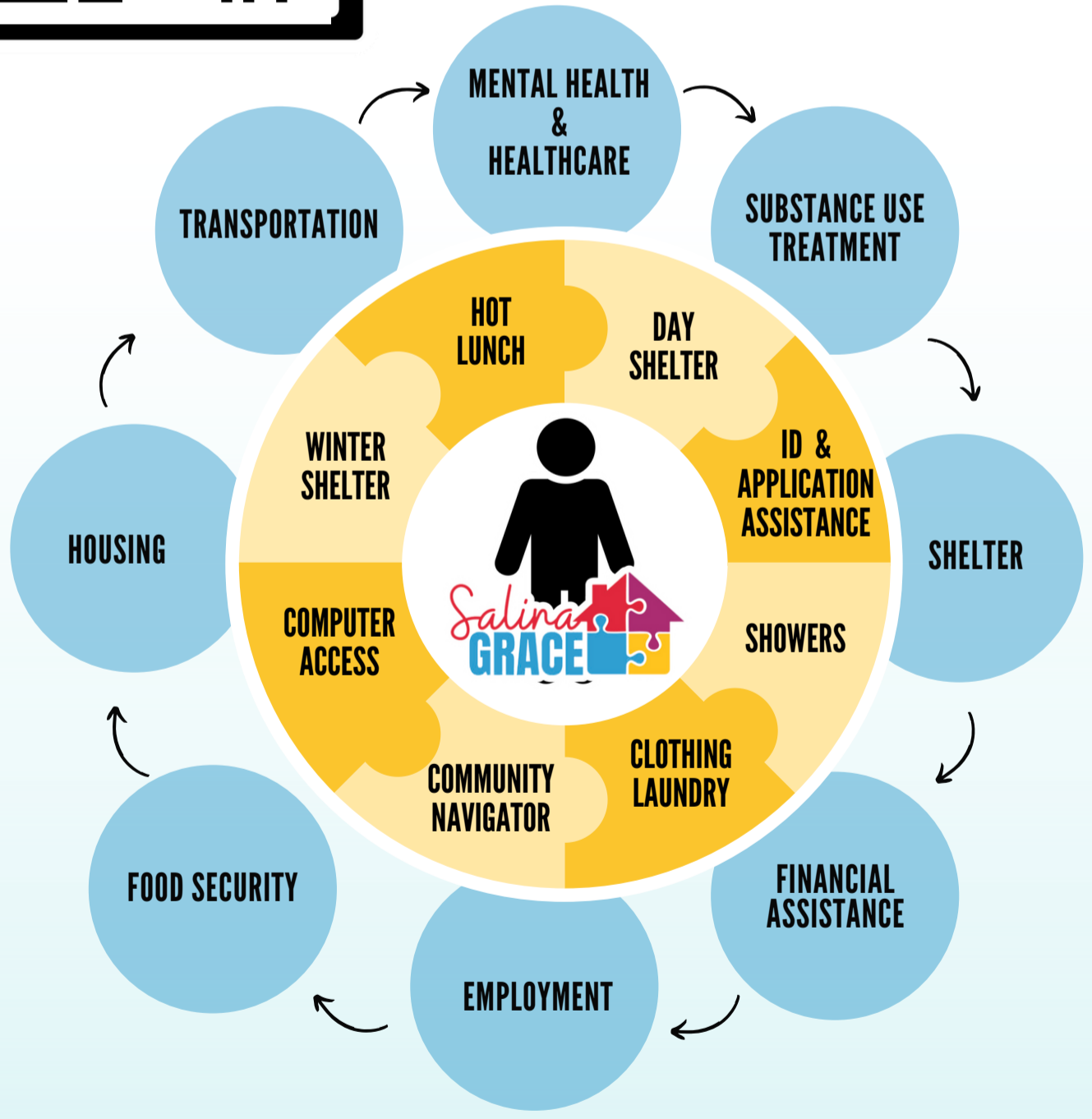
FRIDAY

7:30 AM - 2:00 PM

***Closed on select holidays**



HELP STARTS HERE



MAKE A ONE TIME OR RECURRING GIFT ONLINE

WWW.SALINAGRACE.ORG



WEBSITE



PAYPAL



@salinagrace

Clothing

Ashby House Free Store

150 S. 8th St. | (785) 826-4935
Monday - Thursday: 9 AM - 12 PM

Catholic Charities

1500 S. 9th St. | (785) 825-0208
Monday - Thursday: 8 AM - 3 PM | Friday 8 AM - 1 PM
Bring proof of ID and income | Available every other month

The Salvation Army Thrift Store

157 S. 5th St. | (785) 823-1409
Monday - Saturday: 9 AM - 5 PM
Call (785) 823-2251 to see if you qualify

Salina Rescue Mission

1716 Summers Rd | (785) 823-2610
Men's Clothing Only

Laundry

Salina Grace Community Resource Center

315 S. Broadway Blvd | (785) 833-2360
Daily 9 AM - 11 AM

Salina Shares Laundry Love (785) 452-2929

Missing Sock Laundromat | 2013 S. Ohio St.
9 AM - 1 PM on the 4th Saturday of the month

Speedy Wash Laundromat | 514 E. Iron Ave.
5 PM - 9 PM on the 3rd Tuesday of the month

Quick + Clean Laundromat | 1515 W. Crawford St.
12 PM - 4 PM on the 4th Saturday of the month

Shower

Salina Grace Community Resource Center

315 S. Broadway Blvd | (785) 833-2360
Daily 9 AM - 11 AM

Salina Rescue Mission

1716 Summers Rd | (785) 823-2610
Showers for men and women available at no cost daily

YMCA

570 YMCA Dr. | (785) 825-2151 Must show ID
First 2 showers are free, \$3 for each shower after

Transportation

OCCK (785) 826-1583

Transportation to appointments

Salina Grace Community Resource Center

315 S. Broadway Blvd. | (785) 833-2360
City Go bus passes - limited

Catholic Charities

1500 S. 9th St. | (785) 825-0208
Monday - Thursday: 8 AM - 3 PM | Friday 8 AM - 1 PM
Two all-day bus passes per person / every other month
Can also receive a \$10.00 gas voucher every 6 months w/proof of job or doctor appointment

Salina Shares

155 S. 5th St. | (785) 452-2929
Monday - Friday: 10 AM - 5 PM
City Go bus passes-limited

Additional Resources

CKF Addiction Treatment (785) 825-6224

Treatment, education, and resources for substance abuse

Central Kansas Mental Health Center (785) 823-6322

Provides mental health care, case management, and adult community support services
Same-day Access Open Clinic Monday - Friday: 12 PM - 3 PM

Department of Children and Families (785) 826-8000

Food stamps and medical cards

Department of Veterans Affairs (785) 826-1580

Veterans health services and housing assistance

Independent Connections (785) 452-9580 serves people of all ages and with any disability in nine North Central Kansas Counties.

KANSASWORKS (785) 827-0385

2259 S 9th St, Suite 10
Job search and readiness services, veteran services, and training opportunities available

National Alliance on Mental Illness (785) 233-0755

Mental health support group services

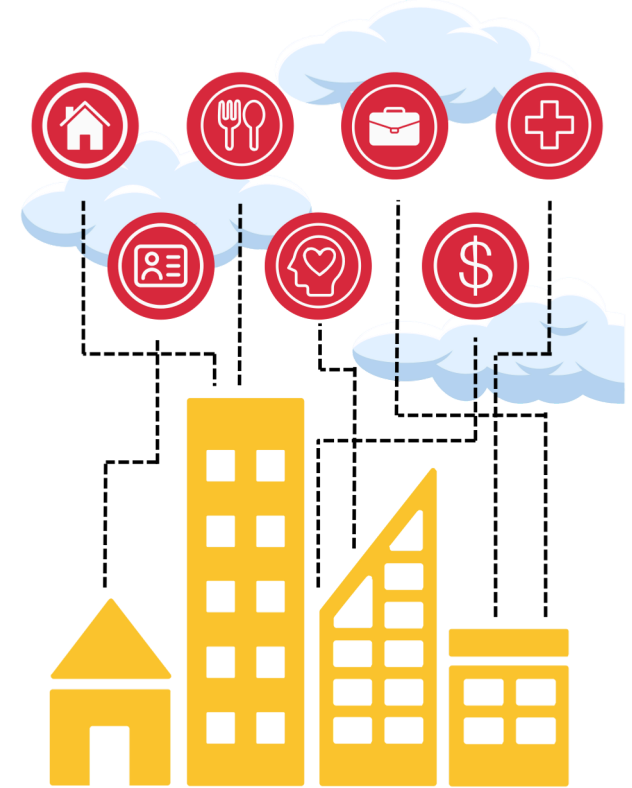
Salina Family Healthcare Center (785) 825-7251

Medical, dental, vision, behavioral health, pharmacy and community outreach services

Salina Public Library (785) 825-4624

Salina Shares (785) 452-2929

Help with household items for those starting over



COMMUNITY RESOURCE GUIDE



Prepared By

salinagrace.org

Need more copies or a digital version of this brochure?

Contact: Salina Grace Community Resource Center

info@salinagrace.org

785.833.9313

Produce/Food Boxes

Salina Emergency Aid Food Bank

255 S. Chicago St. | (785) 827-7111

ID & proof of residence

Monday - Friday @ 1 PM and

Monday nights @ 5 PM

May receive food assistance once every 7 days, 3 visits/mo.

Call for other programs: Homeless Bags; Senior Food Boxes, Food 4 Kids Backpack Program; Temporary Tote Outreach

Ashby House Free Store

150 S. 8th St. | (785) 826-4935

Saturday: 9:00 AM until produce is gone

Bring your own bags

Catholic Charities

1500 S. 9th St. | (785) 825-0208

Monday - Thursday: 8 AM-5 PM | Friday 8 AM - 2:30 PM

Bring proof of ID and household income

May receive assistance once per month for food & once every other month for hygiene items

Higher Praise Church

1220 Greeley Ave. | (785) 819-3301

Tuesday - Friday: 10 AM - 2 PM

Anyone can receive food assistance once per month

New Community Christian Church

530 E. Cloud St. | (785) 823-2214 Call to inquire

Blessing Box in church parking lot

Salina First Church of the Nazarene

1425 S. Ohio St. | (785) 823-6331 Call to inquire

Tuesday-Thursday 8:30 AM - 4:30 PM

Salina Shares

155 S. 5th St. | (785) 452-2929

Monday - Friday: 10 AM - 5 PM

Fresh fruit available

The Salvation Army

1137 N. Santa Fe Ave. | (785) 823-2251

Free produce - Monday, Wednesday, Friday at 1 PM

Bring your own bags

Meals

Salina Rescue Mission

1716 Summer Rd. | (785) 823-2610

Lunch Daily 12 - 12:45 PM | Dinner Daily 6 PM

Salina Grace Community Resource Center

315 S. Broadway Blvd. | (785) 833-2360

Monday - Friday: 11:30 AM - 12 PM

The Salvation Army

1137 N. Santa Fe Ave. | (785) 823-2251

Monday - Friday: 4 - 5:30 PM

New Jerusalem Missionary Baptist Church

321 N. 8th St. | (785) 820-9100

Open Door Kitchen Free Meals 4th Saturday of the Month

January - November (weather permitting)

Pick-up at church from 10:30am - 11:30am

Carry-out meals available at 12:00pm until gone

Shelter/Housing

Salina Rescue Mission (785) 823-2610

Shelter and rehabilitative programs for men 18+

Ashby House (785) 826-4935

Shelter for women and children

DVACK (785) 827-5862

Housing and counseling for victims of domestic violence, teen-dating violence, sexual assault, elder abuse, and human trafficking

Salina Grace Community Resource Center

315 S. Broadway Blvd. | (785) 833-2360

Mon - Thurs 7:30 AM - 4:00 PM | Fri 7:30 AM - 2:00 PM

Day shelter and case management services

Salina Grace Winter Shelter (785) 819-5542

November 15th - March 15th

Salina Housing Authority (785) 827-0441

469 S. 5th St. - Section 8 Housing Vouchers

HUD VASH (877) 424-3838

Housing for homeless veterans

Family Services

Department of Children and Family

901 Westchester Dr. Suite A | (785) 826-8000

Monday - Friday: 8 AM - 5:00 PM

CAPS

155 N. Oakdale Ave. Suite 200 | (785) 825-4493

Monday - Friday: 8:30 AM - 5:30 PM

Pregnancy Service Center

1101 E. Republic Ave. | (785) 823-1484 | Text: (785) 309-6313

Monday - Thursday: 10 AM - 4:30 PM | Friday: 10 AM - 2 PM

Birthright

1125 E. Iron Ave. | (785) 823-3113 | 24hour: 1 (800) 550-4900

Monday-3PM-5PM, Tuesday-Thursday 4 PM-6 PM

Health Department

125 W. Elm St. | (785) 826-6600

Monday, Tuesday, Thursday, Friday: 8 AM - 4:30 PM

Wednesday: 8 AM - 6:30 PM

Maternal and Child Health, Home Health, Clinic Services

low-cost vaccines for children 18 and under without insurance

WIC Program by appt only Monday - Thursday

Catholic Charities

1500 S. 9th St. | (785) 825-0208

Monday - Friday: 8AM - 5PM | Friday 8 AM - 2:30 PM

Financial Assist.

CAPS

155 N. Oakdale Ave. Suite 200 | (785) 825-4493

Monday - Friday: 8:30 AM - 5:30 PM

Must be a client actively working with CAPS

Catholic Charities

1500 S. 9th St. | (785) 825-0208

Monday - Thursday: 8 AM - 5 PM | Friday 8 AM - 2:30 PM

Department of Children and Family

901 Westchester Dr. Suite A | (785) 826-8000

Monday - Friday: 8 AM - 5:00 PM

The Salvation Army

1137 N. Santa Fe Ave. | (785) 823-2251

Monday - Friday: 9 AM - 5 PM Call for Appointment

Must have disconnection notice or eviction notice

NEED HELP?



315 S Broadway Blvd
Salina
785-833-2360
salinagrace.org



MON - THU
7:30 AM - 4:00 PM

FRIDAY
7:30 AM - 2:00 PM

- Day Shelter
- Free Lunch M-F 11:30AM -12:00PM
- Showers, Laundry, Clothing
- Case Managers On-Site
- Winter Shelter (Nov 15 - Mar 15)

**PERSONALIZED SUPPORT TO GUIDE YOU
ON YOUR JOURNEY FORWARD**

WEEKEND & EVENING ASSISTANCE - SALINA, KS



ASHBY HOUSE

150 S 8th Street / 785-826-4935

Shelter for Women and Children



DVACK

148 N Oakdale Ave / 785-827-5862

Shelter and Services for
Victims of Domestic Violence



1716 Summers Road
785-823-2610

SALINA RESCUE MISSION

Shelter for Men

Meals - 7 Days a Week/Open to All

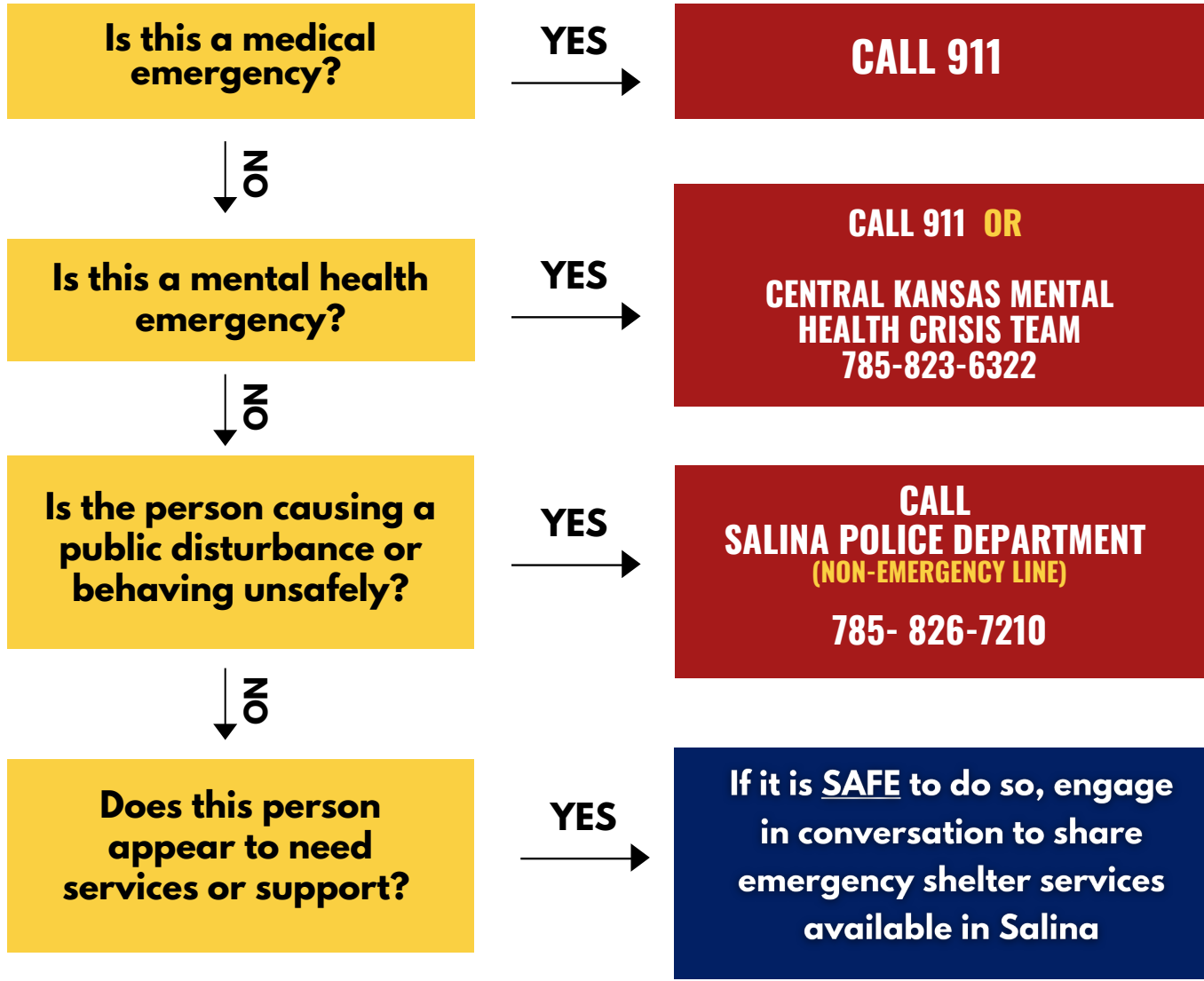
Lunch 12:00pm - 12:45pm Dinner 6:00pm

Showers Available - Men and Women



I SEE SOMEONE WHO APPEARS TO BE HOMELESS OR IN NEED OF ASSISTANCE

HOW CAN I HELP?



EMERGENCY SHELTERS SALINA, KS

SALINA GRACE COMMUNITY RESOURCE CENTER

315 S Broadway Blvd
785-833-2360
M-Th 7:30am-4:00pm
F 7:30am-2:00pm
Free Lunches: M-F 11:30am-12:00pm

ASHBY HOUSE

150 S 8th Street
785-826-4935
Open 24/7
Shelter for Women and Children

DVACK

785-827-5862
Services for victims of human trafficking, domestic/sexual violence, elder abuse

SALINA RESCUE MISSION

1716 Summers Road
785-823-2610
Open 24/7
Shelter for Men
Meals - 7 Days a Week/Open to All
Lunch 12:00pm - 12:45pm Dinner 6:00pm
Showers Available - Men and Women

SALINA GRACE EMERGENCY WINTER SHELTER

Call 785-819-5542 for referral
November 15 - March 15
Men, Women, Children

FREQUENTLY ASKED QUESTIONS

IS IT SAFE TO APPROACH SOMEONE EXPERIENCING HOMELESSNESS?

Most individuals are not dangerous but are simply struggling. If you feel safe, a smile or respectful conversation can make a big difference. If the situation seems unsafe or there's a medical or behavioral health concern, contact local authorities or crisis services.

SHOULD I GIVE MONEY TO PEOPLE ON THE STREET?

While giving money may feel helpful, it often keeps people trapped in cycles of crisis. Instead, support agencies like Salina Grace that provide life-changing, long-term help.

ARE CARE PACKAGES OR "BLESSING BAGS" A GOOD IDEA?

Yes, small bags with snacks, hygiene items, socks, and encouraging notes can be meaningful. Just avoid items that could melt or spoil in heat or cold. Include a resource card with shelter info when possible.

I WANT TO HELP SOMEONE BUT DON'T KNOW HOW. WHAT CAN I DO?

Encourage them to visit the Salina Grace Community Resource Center at 315 S. Broadway Blvd. or call 785-833-2360. Sometimes, your encouragement is the first step to lasting change.



SALINA GRACE IS HERE TO HELP

WHAT IS SALINA GRACE?

Salina Grace is a nonprofit, faith-based organization serving individuals and families experiencing homelessness or housing instability in Salina. Through our **Emergency Winter Shelter** and our **Community Resource Center**, we provide safety, support, and connections to long-term solutions.

WHO DO YOU SERVE?

We serve anyone who is homeless or at-risk of homelessness—including men, women, families, children, veterans, and seniors. All services are free thanks to generous donations from the community.

HOW CAN I SUPPORT SALINA GRACE?

MAKE A ONE TIME OR RECURRING GIFT ONLINE

WWW.SALINAGRACE.ORG



WEBSITE



PAYPAL



@salinagrace

venmo